



# Great River Regional Library

## Operating Budget Breakdown & Regional vs Local Operations





## Who Pays for GRRL Library Services?

### **Tax dollars from cities**

Provide library buildings and furnishings

### **Tax dollars from counties**

Provide residents' access to library services at whatever GRRL library is most convenient to them.

### **State and federal funding**

Supports additional services like interlibrary loan and shared databases.



# Signatory Designations

## **The JPA designates representation on the GRRL Board:**

### 2. THE GOVERNING BOARD

The Library shall be governed by a board of trustees, consisting of fifteen (15) trustees which shall have all the powers and duties of county library boards as provided in the Minnesota Statutes, Section 134.20 and shall be constituted as follows:

2.1 Trustees shall be appointed by the governing boards of the parties to this Agreement. The seats shall be distributed on the basis of budget shares except that no signatory shall have less than one seat.

GRRL Bylaws stipulate that it is the duty of the board to review the signatory agreement every three years. Next time will be 2027. Among other regional signatory agreements, some distribute trustees the same, some differently – e.g. ECRL gives three Board seats to every member county. That is a decision among the signatories.

# The Budget

## Signatory Factor Table

How much a country contributes depends on 3 factors:

1/3 Population

1/3 Registered Borrowers

1/3 Net Tax Capacity

## 2026 Approved Budget

**\$10,574,275.00**

72.26% = Signatory support  
(\$7,640,954)

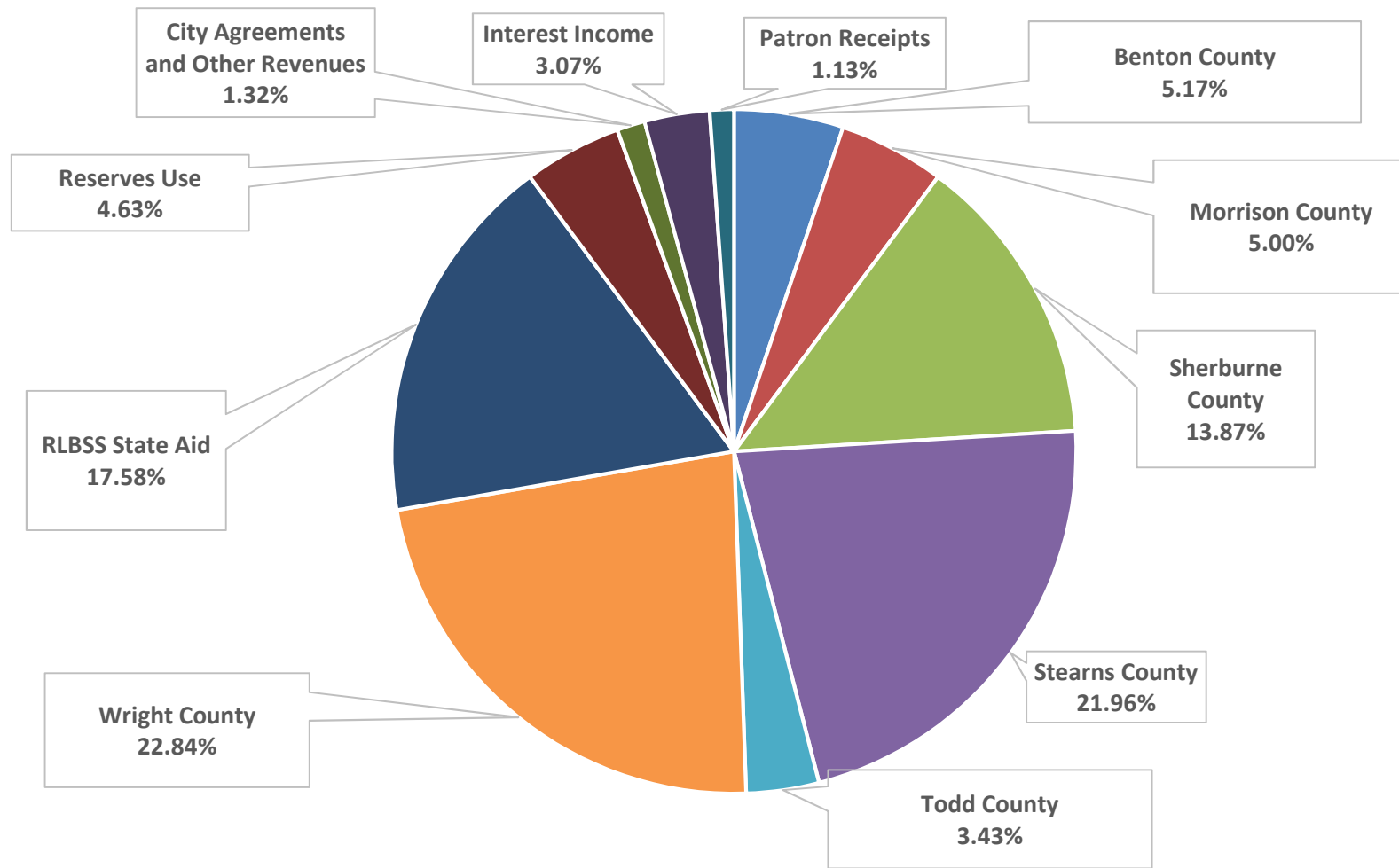


# Signatory Per Capita Amounts 2022-2026

County	2022	2023	2024	2025	2026
Benton	\$12.82	\$13.42	\$13.05	\$13.10	\$13.08
Morrison	\$14.67	\$15.46	\$15.19	\$14.94	\$15.36
Sherburne	\$13.89	\$15.01	\$14.74	\$13.96	\$14.29
Stearns	\$14.20	\$14.96	\$14.44	\$13.88	\$14.36
Todd	\$13.54	\$14.12	\$13.79	\$13.52	\$14.06
Wright	\$15.63	\$16.53	\$16.02	\$15.55	\$15.90

# 2026 GRRL Revenue Budget Overview

## How is the Library System Funded?



# Maintenance of Effort (MOE) VS Signatory Operating Contributions



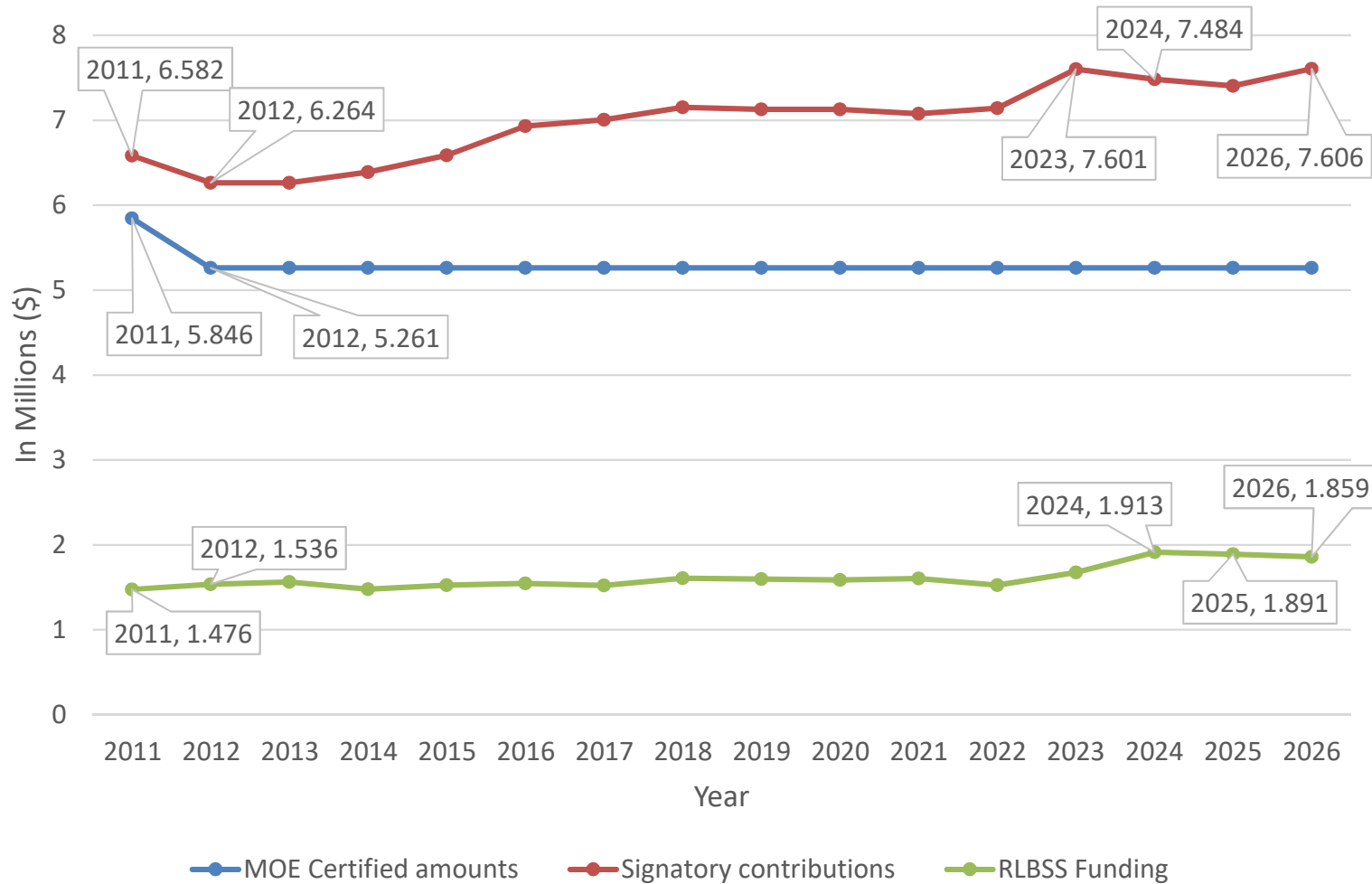
## MOE

- Amounts set in 2012
- Based on 90% of 2011 contributions
- Set by the State of Minnesota (MDE)
- Prior to 2011, amounts were based on previous 3 years of contributions
- Current amounts do not reflect inflationary or other adjustments
- Reflects the minimum a city/county can pay in order to receive state library services
- Does not reflect the cost to run a library system

## Signatory Contributions

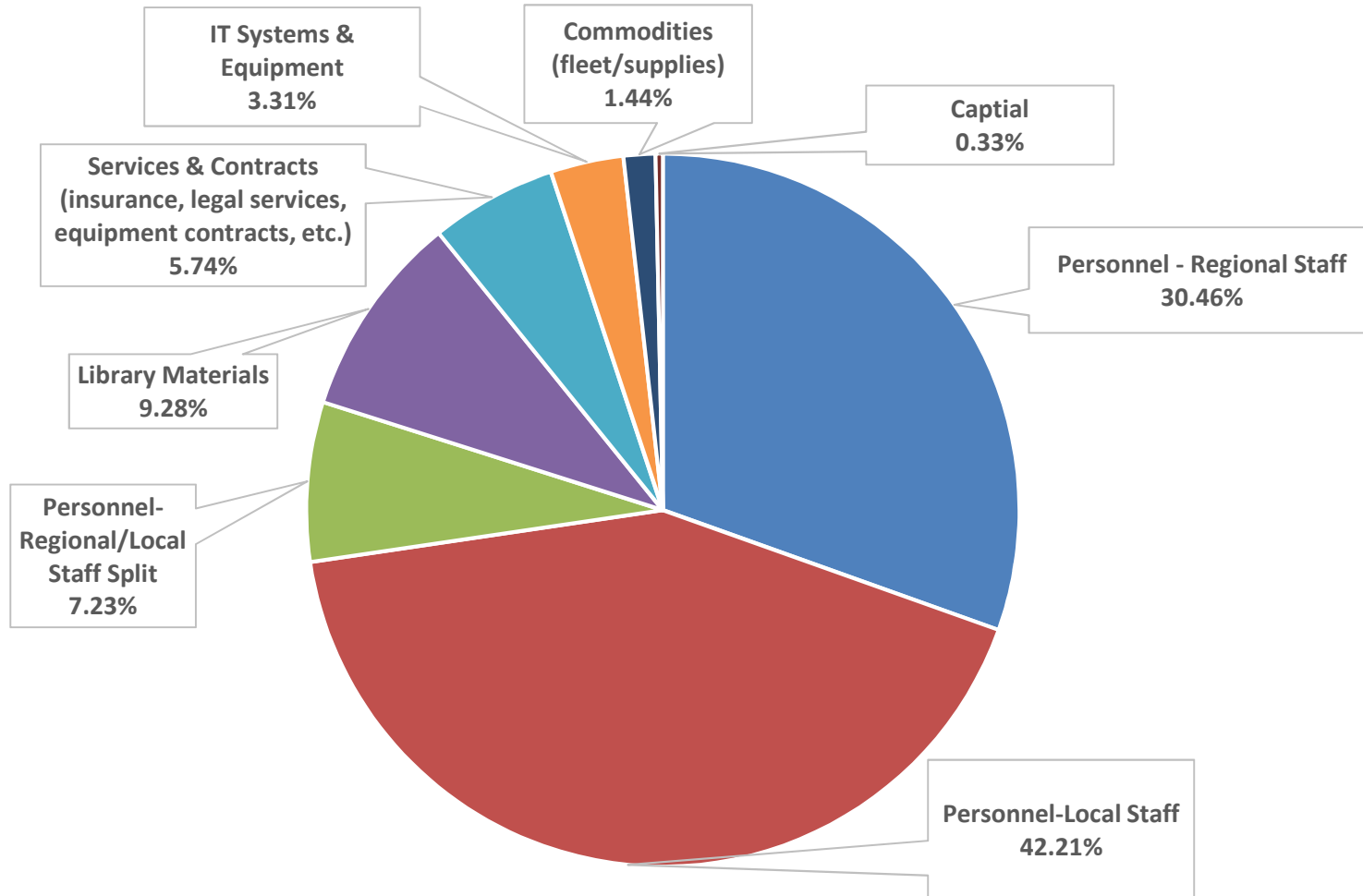
- Amounts are updated year to year
- Reflects inflationary measures and wage increases
- Set using a base budget process (aka how much will it cost next year to do the same as this year)
- Discussed by BOT over several months
- Percentages change annually based on 3-part formula: population, borrowers and net tax capacity
- Help fund the operating budget/current level of service

## GRRL Signatory Funding by year in relation to MOE and RLBS amounts




# 2026 GRRL Expense Budget Overview

How is the Operating & Capital Budget Spent?





## **Unassigned Fund Balances: Investments & Interest Income**

- Critical to long term financial stability
  - Reduce burden on counties
  - Helps maintain flatter budgets
  - Contributes over 3% of the revenue budget
  - Additional interest is a component of surplus
  - Leadership is exploring opportunities to grow revenue, e.g. working with Ehler's Financial to expand short & long term investments
- 

# 2026 GRRL Designated/Restricted Revenue

The operating budget does not include grants/gifts/donations.

These assigned funds support regional services and materials unless otherwise designated by the donor.

## Grants

### -Legacy

(Clean Water Land & Legacy Amendment:  
Arts and Cultural Heritage Fund)

### -RLTA

(Regional Library Telecommunications Act)

### -Minitex Last Mile

(helps fund ILL deliveries)

## Fund Development Split

55%-Collection Development

20%-Communications

25%-Patron Services

## Gifts & Donations

-Individual Donors

-Sponsorships

-Friends of the Library

-Planned Giving

-Gift Funds:(Branch, Regional & Designated)

-Campaigns:

Year End

Locally Growin'

Summer Reading Challenge

General




## City support vs Signatory Support

### **Places:**

Cities provide the 32 library building locations.


### **People & Things:**

County / Signatory support helps fund library service, allows for each of their residents to use any locations convenient to them, amount is calculated based on the signatory factors.





# Regional Operations

- **Regional staff provide services and support for all 32 branches.** All branches receive equitable services, and regional staff can pivot as needed to support individual branches for short term projects.
  - **The library collection is shared and floats freely among all GRRL libraries (Library Development Policy).** Some locations can hold more items but any item in the collection could be at any location on any given day.
- 

---

---

## Regional vs Local staff?

### Who are Regional Staff?

- **Staff who support all branches**
- Administration
- Leadership Team
- Accounting
- Human Resources
- Information Technology
- Communications/Marketing
- Fund Development
- Collection Development
- Distribution/Circulation/Drivers
- Technical Services

### Who are Local Staff?

- **Staff who support services at specific branches**
- Library Service Coordinators
- Library Assistants, Associates and Aides

*Some positions are both local and regional.*



## Regional Staff Examples

### Associate Director – Collection Development (Jami)

Regional/Regular responsibilities	Local projects/dedication
Oversees the regional physical and digital collection of library materials (selection and deselection)	Working with new regional and local staff to train, onboard, troubleshoot collection management purposes. Location and length of involvement varies significantly year-to-year.
Provides region wide leadership regarding collection strategy and issues	2025: Significant investment of time co-managing GRRL responsibilities for Elk River reflooring / new shelving project.  2026: Significant investment of time providing leadership for the Cold Spring temporary location. Took on work that normally would be done by Patron Services Supervisor due to staffing turnover.

## Regional Staff Examples

### Human Resources Generalist: Dezra

Regional/Regular responsibilities	Local projects/dedication
Assists with recruitment process and applicant tracking system	In any given year, some branches will have more turnover than others. Some branches go a few years or more before there is turnover, others may have multiple new staff every year.
Assists with job interviews and postings	2026: Summer Aide positions. Nearly 300 applications to review, 28 interviews for 8 positions in 7 locations in Benton, Sherburne, Stearns, & Wright counties.
Facilitates onboarding of new employees across the region	Because of differences in staff turnover by branch, there are also differences in onboarding/training resources provided

---

---

*Thank you,  
Brandi & Addie*

