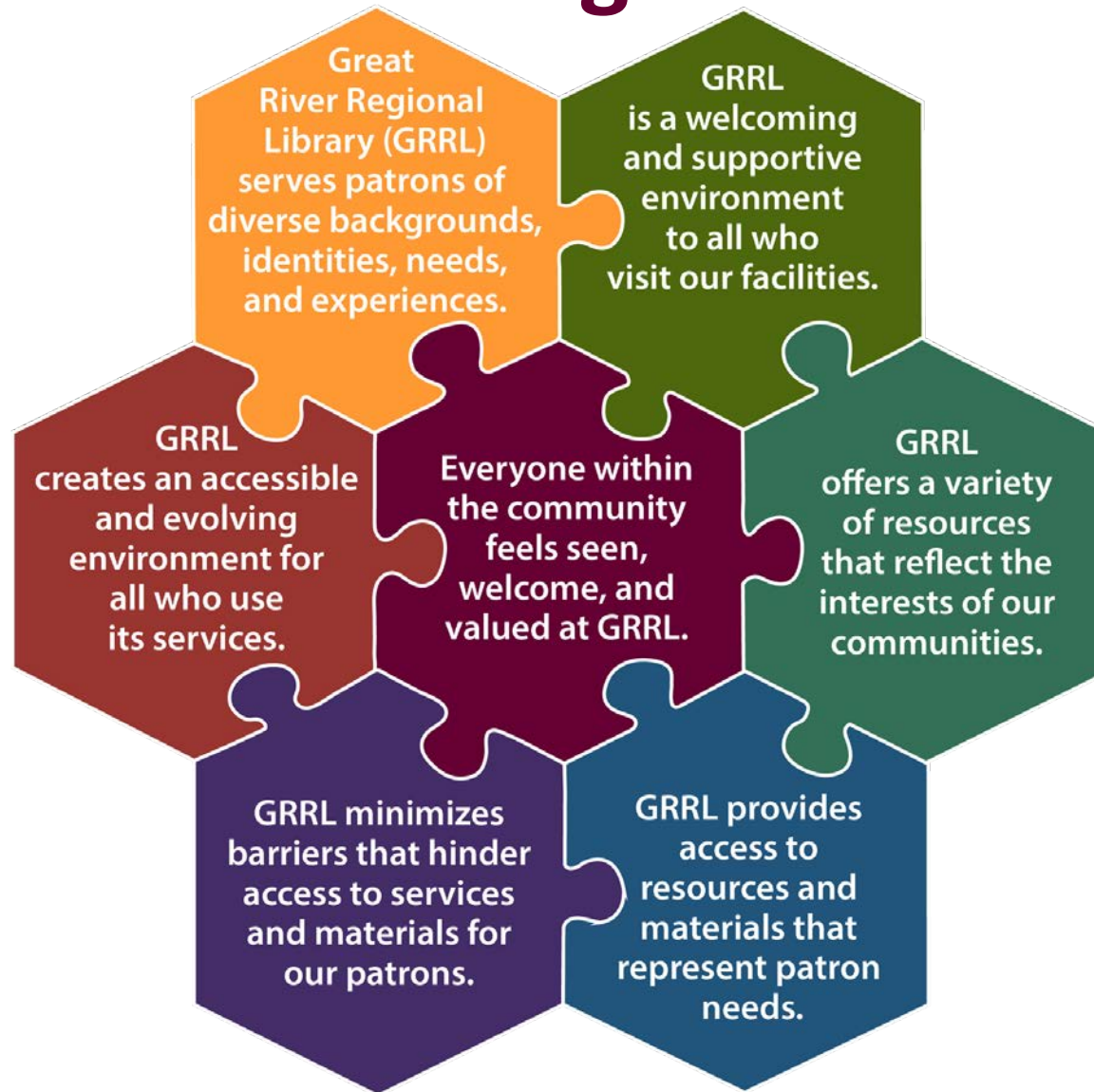


# Great River Regional Library



# Strategic Priority: Access

## New resident borrowers by library and regional increase.



**Howard Lake  
NEW**



**Annandale  
RECARPETED**



**Eagle Bend  
EXPANSION**

# Strategic Priority: Access

Have programs and services for patrons with special needs.



**Calming Room**



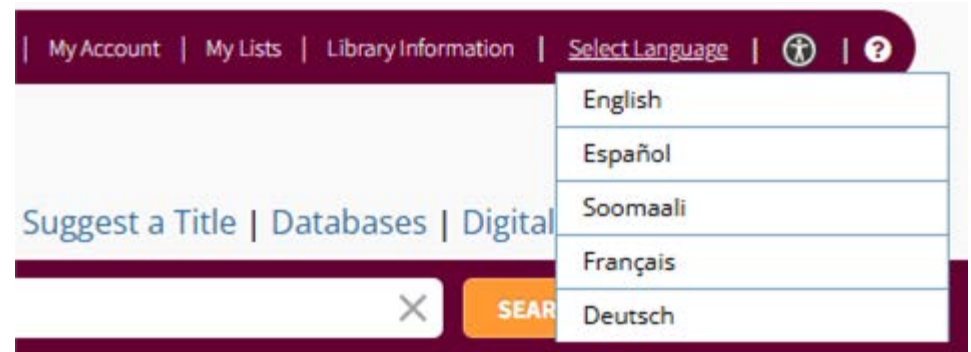
**Sensory Kit**

# Strategic Priority: Access

## Maximize accessibility of digital tools and library website.



WiFi2Go



Language selection in library catalog

# Strategic Priority: Access

Increase display of library materials to represent a wide range of experiences and viewpoints at all libraries.



# Strategic Priority: Library Awareness

Increase targeted advertising to reach a wider audience.



# Strategic Priority: Library Awareness

Increase the information about diversity, equity, and inclusion efforts with the GRRL Board.



WACOSA's Adaptive Media Project



WACOSAmn  
39 subscribers

Subscribe



Share

Download

Save



# Strategic Priority: Operational Excellence

## Improve recruitment processes and job descriptions.

### **OUR COMMITMENT TO DIVERSITY AND INCLUSION**

GRRL is committed to recruiting and retaining a diverse workforce and providing a work environment free from discrimination and harassment.

We seek to foster an environment of inclusion where all employees are treated respectfully and are valued for their strengths. Our work is guided by our values of providing exceptional customer service, being forward thinking and having a community focus that serves patrons from all socioeconomic, educational, literacy, and cultural backgrounds.



# Strategic Priority: Operational Excellence

Continue efforts to address diversity, equity, and inclusion in the library.



**Every Meal**



**Little Lifeline at SCPL**

# Strategic Priority: Operational Excellence

Continue efforts to address diversity, equity, and inclusion in the library.

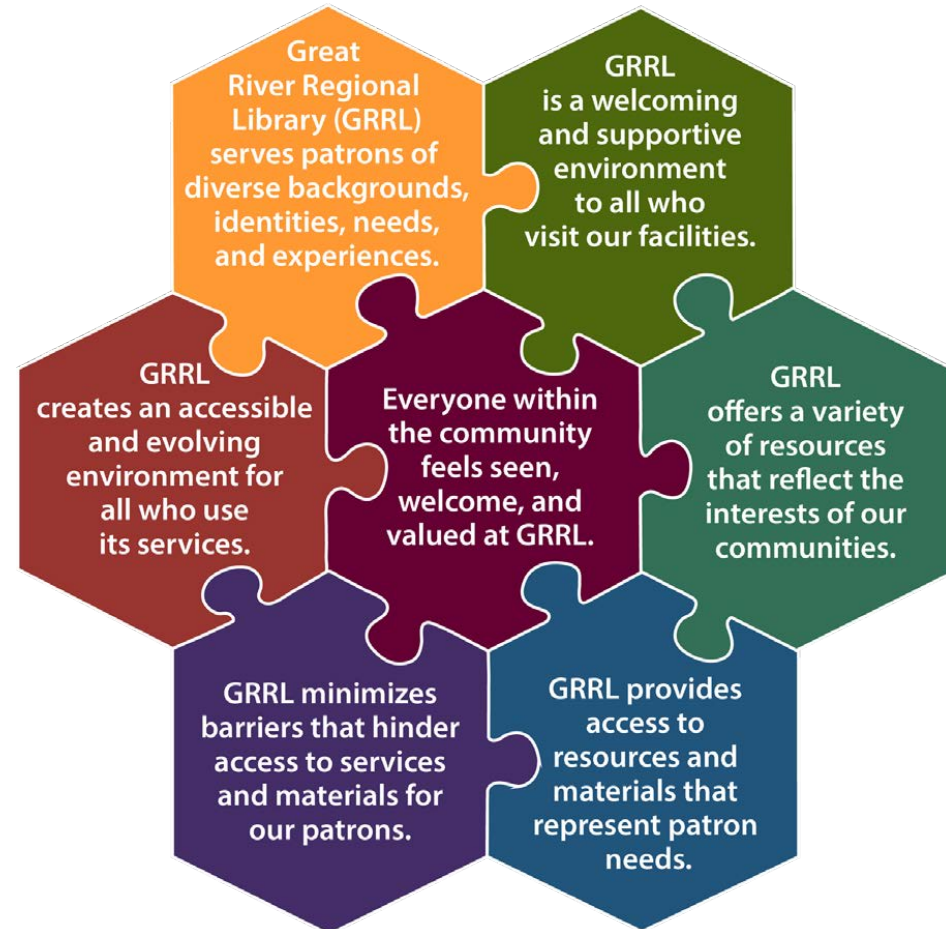


# The DEI Team:

*An Assessment & Continuous  
Quality Improvement Activity to:*

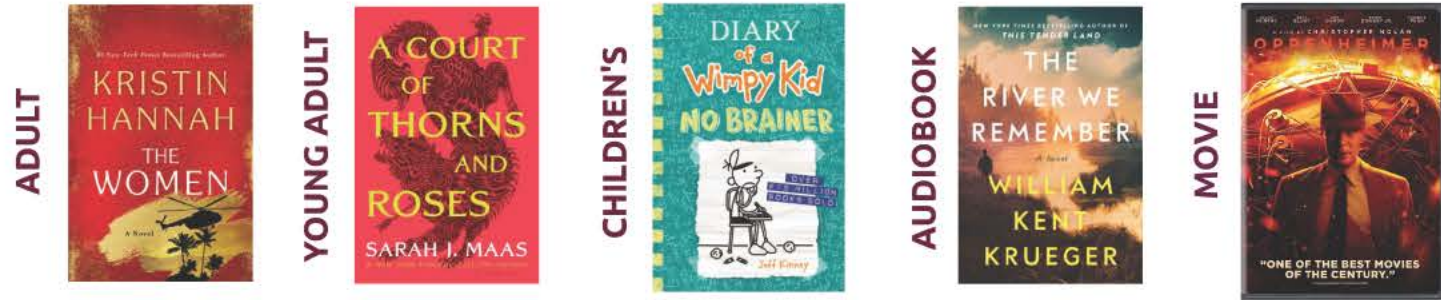
- Increase feeling of welcoming and belonging
- Strengthen relationship between public and library staff
- Exposure to new ideas and cultures
- Increase trust in the library
- Enhance connection and civic engagement among community members

# DEIB Graphic: Our First Initiative



# MOST POPULAR CHECKOUTS

These are the most frequently checked out titles by category in 2024.



# PROGRAMS



Pictured: Storytime in Waite Park

**2,741**  
programs & events

---

**62,375**  
attended programs

The Summer Reading and Winter Reading Challenges were available to library users both in their local library and online through the Beanstack app.

**13,414**

record-breaking children & teens participated in Summer Reading Challenge

**3,149**

teens & adults participated in Winter Reading Challenge

Many of the additional programs and events region-wide were storytime and book clubs. Also, we offered programs that were made possible with the Arts & Cultural Heritage Funds from Minnesota's Clean Water, Land, and Legacy Amendment.



# 2024 ANNUAL REPORT



## Great River Regional Library Vision

The Neighborhood Gateway: Inspiring Central Minnesota to shape the future through exploration, knowledge and connection.



# SUPPORTING GROWING COMMUNITIES



Pictured: Howard Lake Library, new building opened August 2024

# 2024 HIGHLIGHTS



**Eagle Bend**

Refresh would be the word to describe 2024 across Great River Regional Library's 33 locations. Several of the library buildings took on extensive projects to update their spaces.

At the beginning of the year, the Eagle Bend branch expanded into the Eagle Bend Historical Society & Museum portion of the building. The library remained open while construction was done to incorporate a new meeting space and more space to browse the library's collection. On April 13, Eagle Bend held an Expansion Open House & Anniversary Celebration.

Howard Lake opened in its new net-zero location at 817 8th Avenue on August 12 and held a Library Dedication on October 28. The spacious new building has high-efficiency windows, solar panels, and plenty of natural light. It is the first net-zero library in the state of Minnesota.

A few branches have made renovations to their interior spaces. The Annandale branch recarpeted in March, the Buffalo branch recarpeted in September, and the Monticello branch recarpeted in November. Each project involved moving and reshelving library materials. We are grateful for our strong partnerships with our cities to enhance the library space to make it a welcoming place for all.



**Howard Lake**



**Annandale**



**Monticello**



**Buffalo**

# BY THE NUMBERS

The year 2024 was successful, as we reached a record-breaking number of Summer Reading Challenge participants and saw soaring usage for the digital collection. Here is an overview:



# FINANCIAL OVERVIEW

## REVENUE

County & City Agreements.....	\$7,624,295
Patron Receipts.....	\$124,006
Grants & State Aid.....	\$1,933,380
Interest & Other Receivables.....	\$520,630
Gifts & Donations.....	\$471,841
Cash Reserves.....	\$608,061
<b>Total Revenue.....</b>	<b>\$11,282,213</b>

## EXPENSES

Salaries & Benefits.....	\$7,722,090
Library Materials.....	\$971,370
Operating & Other Expenses .....	\$1,026,538
Grant & Fund Balance.....	\$975,723
Capital Investments.....	\$96,922
Patron Programming & Communications.....	\$100,556
<b>Total Expenses.....</b>	<b>\$10,893,199</b>

# 2024 Board of Trustees

- |                     |                  |
|---------------------|------------------|
| Ed Popp*            | Benton County    |
| Robert Kasper*      | Morrison County  |
| Laura Kangas        | Sherburne County |
| Lisa Fobbe*         | Sherburne County |
| Jayne Dietz         | Sherburne County |
| Alan Amdahl         | Stearns County   |
| Zurya Anjum         | Stearns County   |
| Tarryl Clark*+      | Stearns County   |
| Lynn Grewing        | Stearns County   |
| Leigh Lenzmeier*+   | Stearns County   |
| Tim Denny*          | Todd County      |
| Wayne Bauernschmitt | Wright County    |
| Teresa Dahl         | Wright County    |
| Tina Diedrick*      | Wright County    |
| Melissa Fee         | Wright County    |
| Jacey Wallace       | Wright County    |

+Partial Term \*County Commissioners

# A special thank you to our donors

## 2024 Scholar-level (\$1,000+) donors:

- |                                    |  |
|------------------------------------|--|
| ♦Arnold's of Kimball, Inc.         | ♦Harvest Bank                          |
| ♦Associated Wholesale Grocers      | ♦Henry Dougherty                       |
| ♦Bernatello's Foods                | ♦High Points Networks, LLC             |
| ♦Bernie Berns                      | ♦Garage Door Store                     |
| ♦Catholic Community Foundation     | ♦Lindsay & Mike Neumann                |
| ♦Central MN Noon Optimist Club     | ♦Mark Thelen                           |
| ♦Clearwater Lions                  | ♦Marksman Metal Company                |
| ♦Deborah McCarl & Marilyn Skurdahl | ♦Robert & Susan Meyerson               |
| ♦Debra Japp                        | ♦Royalton American Legion              |
| ♦Denis & Susanna Hynes             | ♦St. Cloud Area Sertoma Club           |
| ♦DOS Offbeats                      | ♦several Friends of the Library groups |
|                                    | ♦several anonymous donors              |